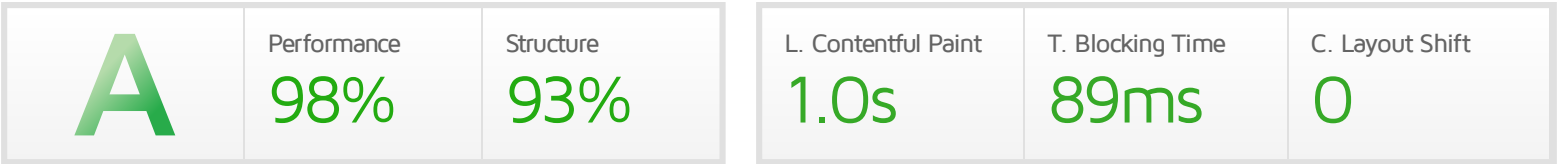


Performance Report for:

https://templatebeta.com/presta/v6_knox_91/en/

Report generated: Sat, Jul 16, 2022 4:34 AM -0700
 Test Server Location: Vancouver, Canada
 Using: Chrome (Desktop) 98.0.4758.102, Lighthouse 9.3.1



Top Issues

IMPACT	AUDIT	
Med	Avoid an excessive DOM size <small>TBT</small>	1,956 elements
Low	Use passive listeners to improve scrolling performance	1 event listener not passive
Low	Avoid enormous network payloads <small>LCP</small>	Total size was 2.24MB
Low	Properly size images	Potential savings of 122KB
Low	Efficiently encode images	Potential savings of 64.1KB

Page Details



Total Page Size - 2.24MB



Total Page Requests - 68



■ HTML
 ■ JS
 ■ CSS
 ■ IMG
 ■ Video
 ■ Font
 ■ Other

How does this affect me?

Today's web user expects a fast and seamless website experience. Delivering that fast experience can result in increased visits, conversions and overall happiness.

As if you didn't need more incentive, **Google has announced that they are using page speed in their ranking algorithm.**

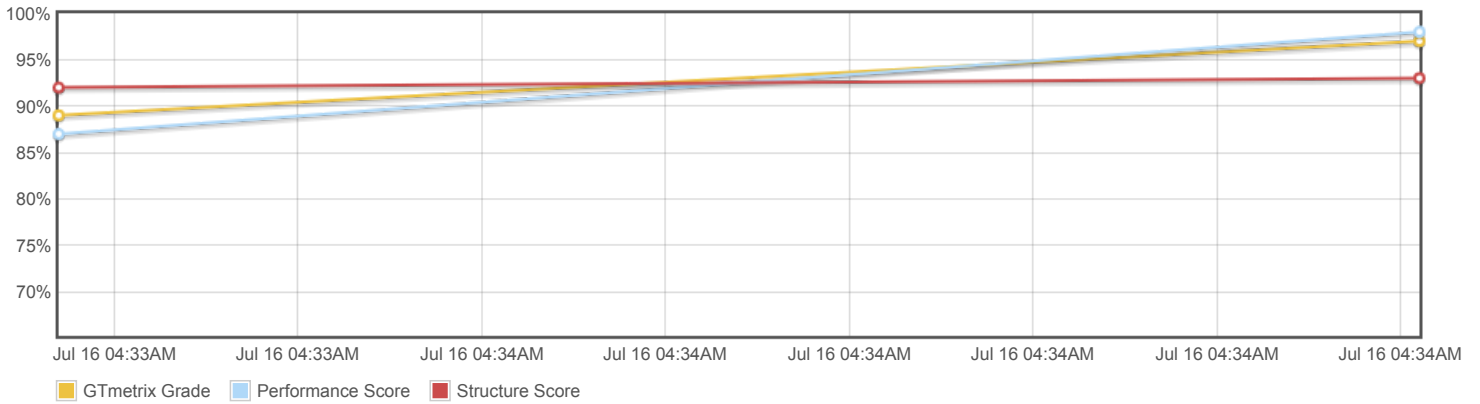
About GTmetrix



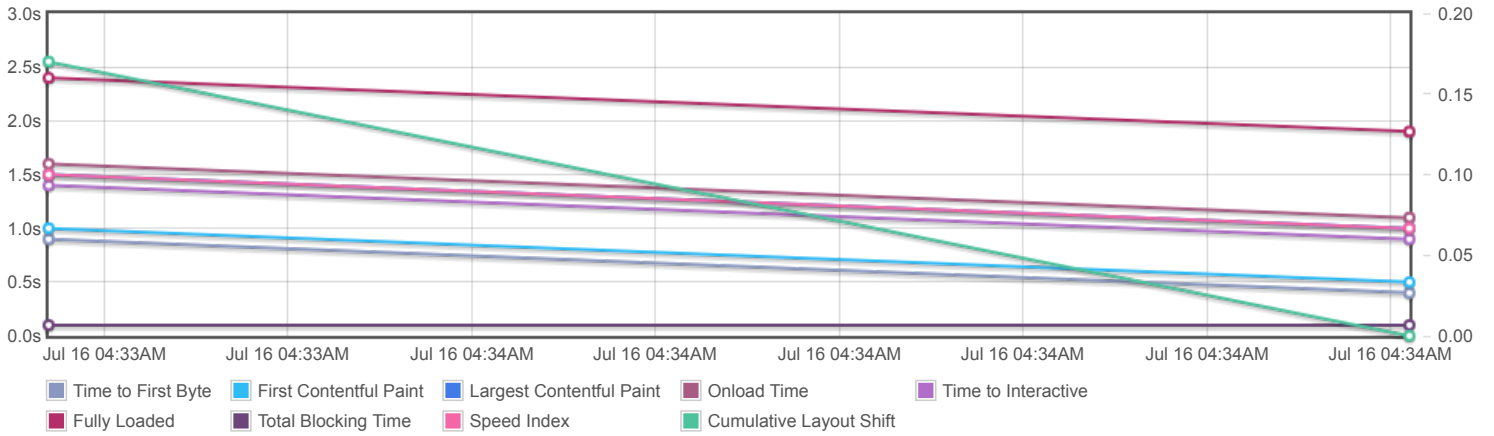
GTmetrix is developed by the good folks at **Carbon60**, a Canadian hosting company with over 26 years experience in web technology.

<https://carbon60.com/>

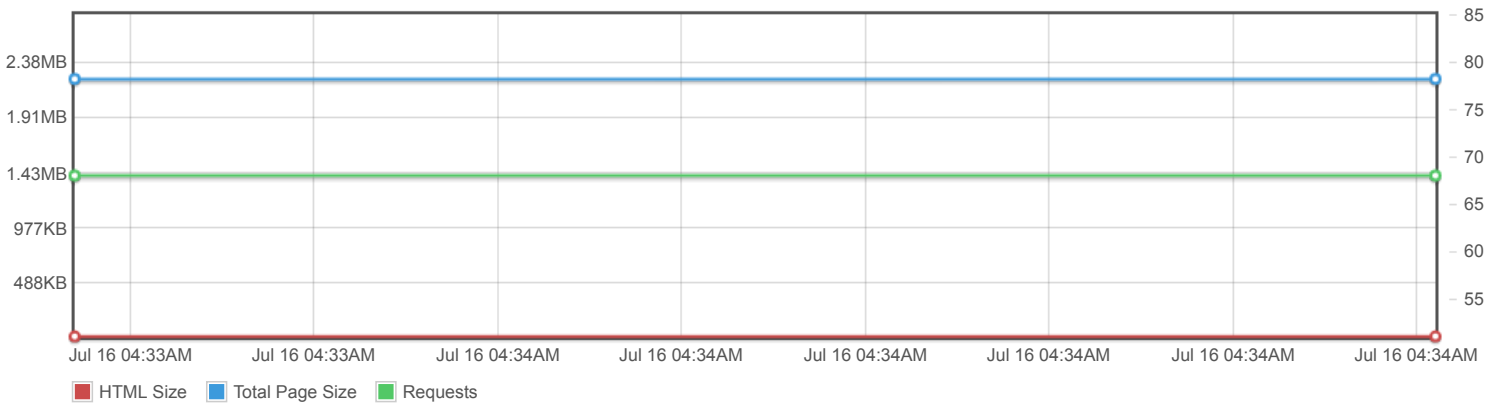
Page scores



Page metrics

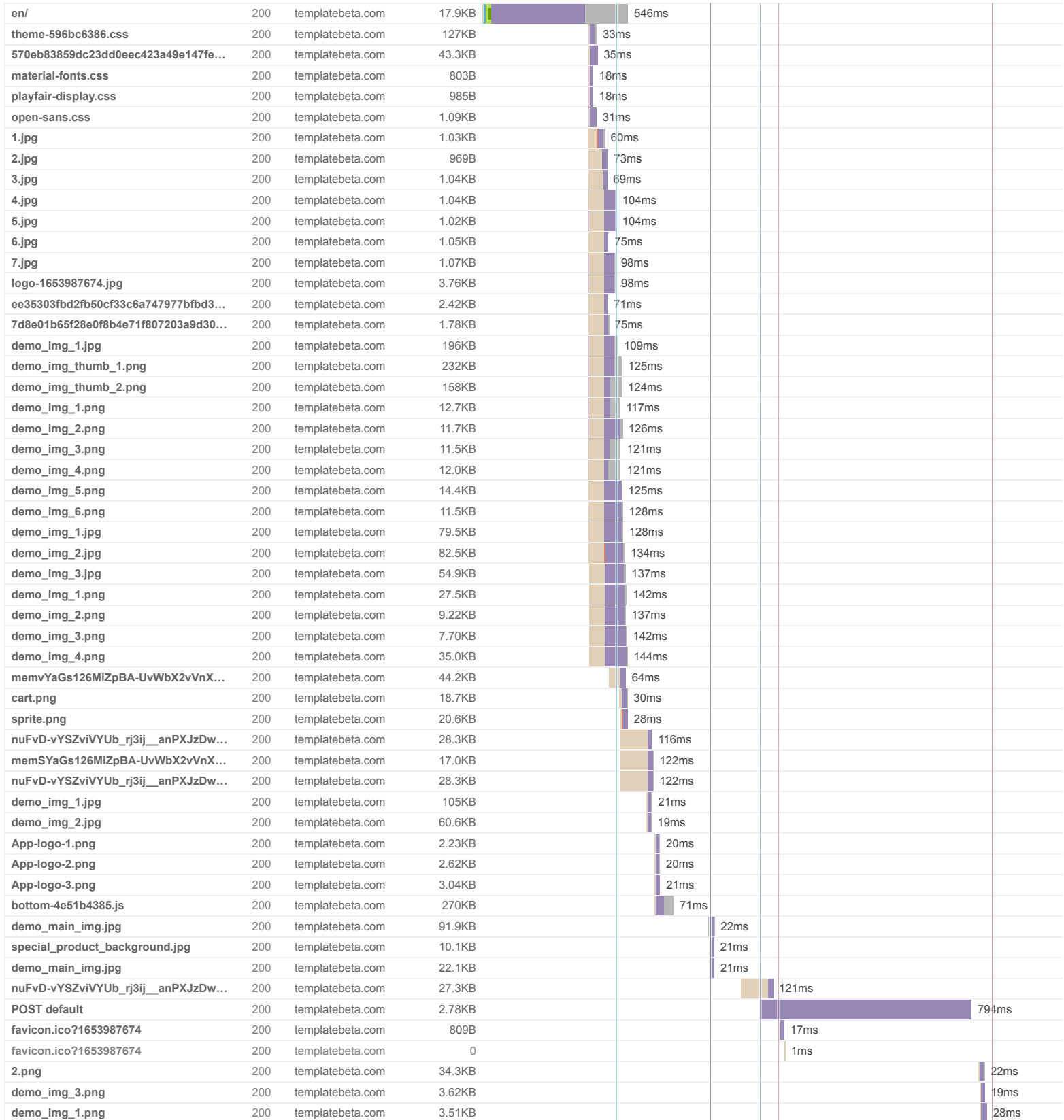


Page sizes and request counts

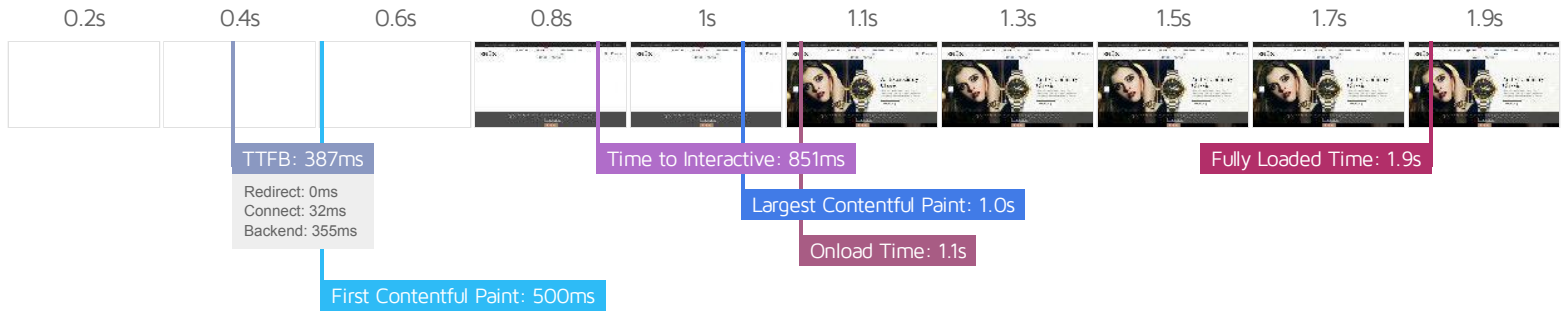


The waterfall chart displays the loading behaviour of your site in your selected browser. It can be used to discover simple issues such as 404's or more complex issues such as external resources blocking page rendering.

Knox Watch Store



demo_img_2.png	200	templatebeta.com	2.85KB					19ms
demo_img_4.png	200	templatebeta.com	3.66KB					24ms
demo_img_5.png	200	templatebeta.com	4.39KB					42ms
demo_img_6.png	200	templatebeta.com	4.33KB					21ms
1.png	200	templatebeta.com	17.5KB					29ms
3.png	200	templatebeta.com	32.9KB					26ms
4.png	200	templatebeta.com	32.5KB					21ms
5.png	200	templatebeta.com	42.8KB					30ms
6.png	200	templatebeta.com	24.4KB					23ms
1_1.jpg	200	templatebeta.com	20.6KB					27ms
2_1.jpg	200	templatebeta.com	18.0KB					24ms
Menu_Banner.jpg	200	templatebeta.com	104KB					27ms
bundle-t-shirt.jpg	200	templatebeta.com	12.8KB					25ms
t-shirt.jpg	200	templatebeta.com	11.6KB					26ms
68 Requests		2.24MB (3.69MB Uncompressed)						Fully Loaded 1.9s (Onload 1.1s)



Performance Metrics

<p>First Contentful Paint</p> <p>How quickly content like text or images are painted onto your page. A good user experience is 0.9s or less.</p>	<p>Good - Nothing to do here</p> <p>500ms</p>	<p>Time to Interactive</p> <p>How long it takes for your page to become fully interactive. A good user experience is 2.5s or less.</p>	<p>Good - Nothing to do here</p> <p>851ms</p>
<p>Speed Index</p> <p>How quickly the contents of your page are visibly populated. A good user experience is 1.3s or less.</p>	<p>Good - Nothing to do here</p> <p>975ms</p>	<p>Total Blocking Time</p> <p>How much time is blocked by scripts during your page loading process. A good user experience is 150ms or less.</p>	<p>Good - Nothing to do here</p> <p>89ms</p>
<p>Largest Contentful Paint</p> <p>How long it takes for the largest element of content (e.g. a hero image) to be painted on your page. A good user experience is 1.2s or less.</p>	<p>Good - Nothing to do here</p> <p>1.0s</p>	<p>Cumulative Layout Shift</p> <p>How much your page's layout shifts as it loads. A good user experience is a score of 0.1 or less.</p>	<p>Good - Nothing to do here</p> <p>0</p>

Browser Timings

Redirect	0ms	Connect	32ms	Backend	355ms
TTFB	387ms	First Paint	500ms	DOM Int.	846ms
DOM Loaded	849ms	Onload	1.1s	Fully Loaded	1.9s

IMPACT	AUDIT	
Med	Avoid an excessive DOM size <small>TBT</small>	1,956 elements
Low	Use passive listeners to improve scrolling performance	1 event listener not passive
Low	Avoid enormous network payloads <small>LCP</small>	Total size was 2.24MB
Low	Properly size images	Potential savings of 122KB
Low	Efficiently encode images	Potential savings of 64.1KB
Low	Eliminate render-blocking resources <small>FCP LCP</small>	Potential savings of 0 ms
Low	Ensure text remains visible during webfont load <small>FCP LCP</small>	1 font found
Low	Avoid long main-thread tasks <small>TBT</small>	2 long tasks found
Low	Reduce JavaScript execution time <small>TBT</small>	282ms spent executing JavaScript
Low	Reduce unused CSS <small>FCP LCP</small>	Potential savings of 117KB
Low	Serve images in next-gen formats	Potential savings of 1.07MB
Low	Reduce initial server response time <small>FCP LCP</small>	Root document took 354ms
Low	Avoid serving legacy JavaScript to modern browsers <small>TBT</small>	Potential savings of 86B
Low	Defer offscreen images	Potential savings of 493KB
Low	Avoid non-composited animations <small>CLS</small>	8 animated elements found
Low	Avoid chaining critical requests <small>FCP LCP</small>	2 chains found
Low	Reduce unused JavaScript <small>LCP</small>	Potential savings of 196KB
N/A	Largest Contentful Paint element <small>LCP</small>	1 element found
N/A	Avoid large layout shifts <small>CLS</small>	3 elements found
N/A	Minimize main-thread work <small>TBT</small>	Main-thread busy for 895ms
N/A	User Timing marks and measures	
N/A	Reduce the impact of third-party code <small>TBT</small>	